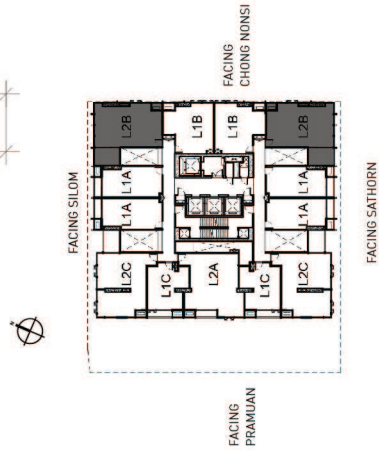
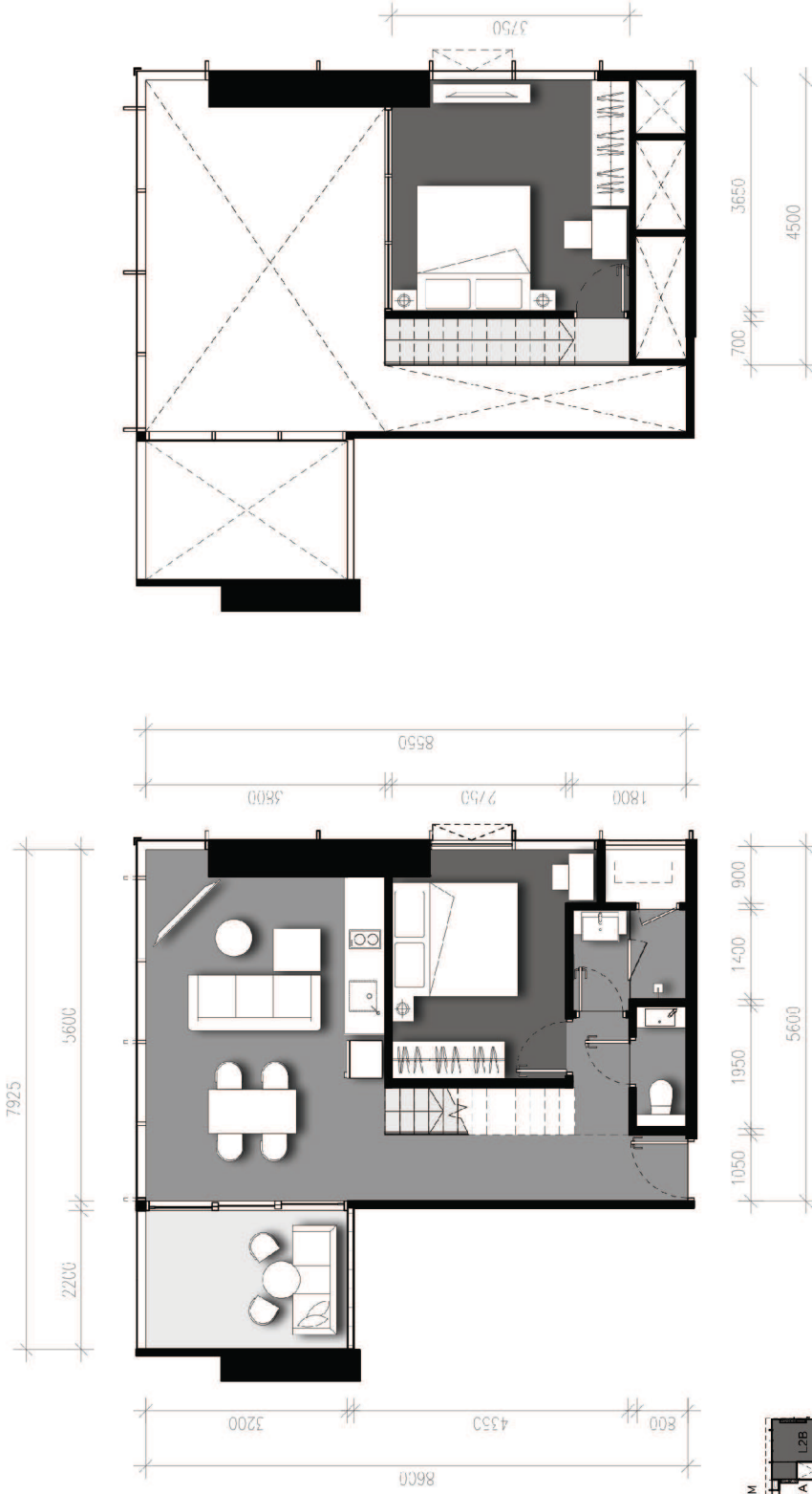


THE
LOFTS
SILOM

UNIT: L2B
UNIT TYPE: HIGH CEILING HYBRID 2-BEDROOM
AREA: 54 SQ.M.



Printing Date: 10 July 2017. All areas are estimated, rounded off and subject to site adjustments. This project is currently under process of Environment Impact Assessment Report (EIA). All terms, conditions, specifications, materials, finishes and other information or details as shown herein are approximation to be used as guideline for consideration and subject to change without prior notice and subject to contract. All rights reserved. Reproduction, photocopy, adaptation, communication or exploitation of all or any parts hereof without permission is prohibited.